

**Barco portacontenedores**

**Tipo post-panamax**

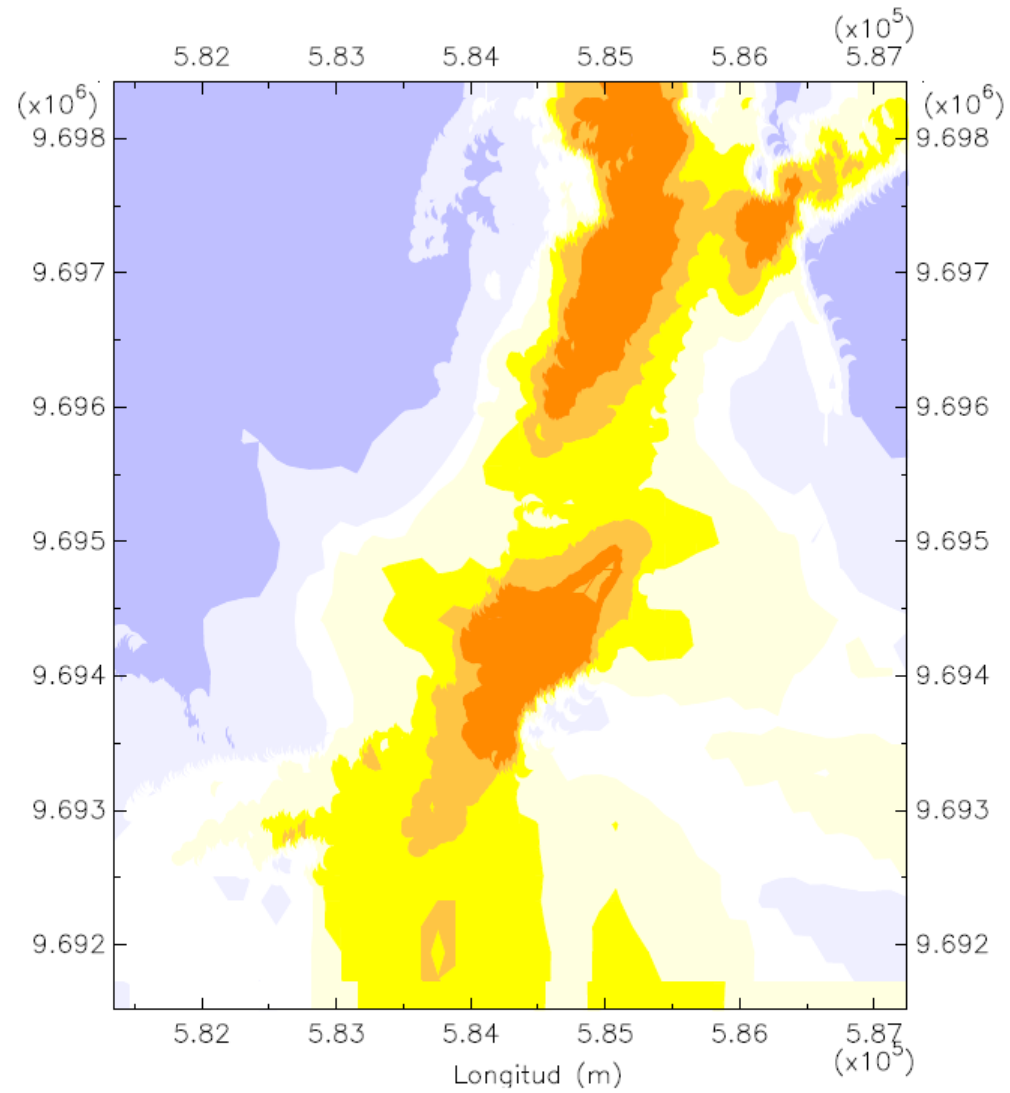
**Eslora: 318.20 m**

**Manga: 42.800 m**

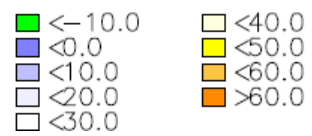
**Calado: 11.60 m**

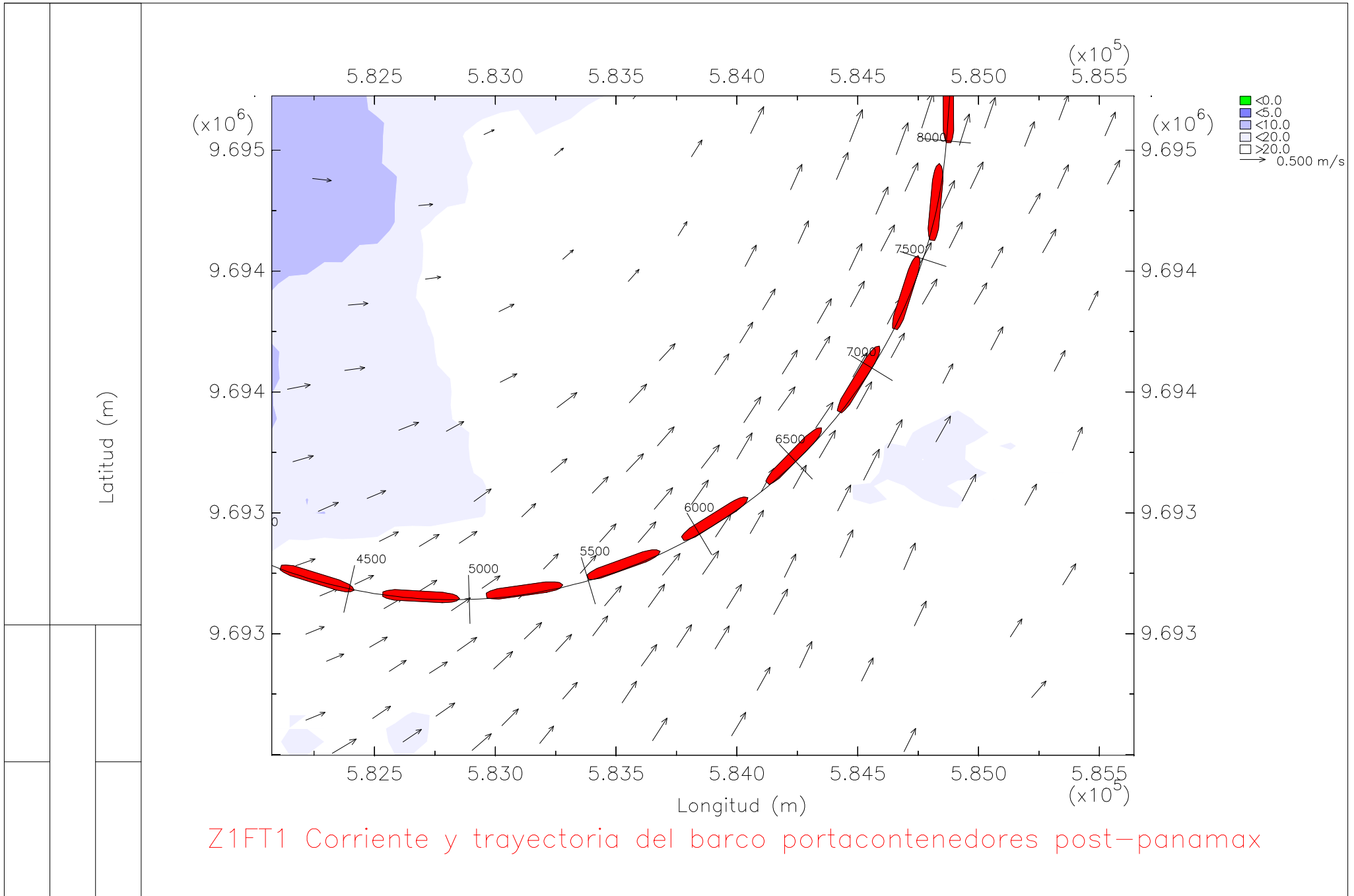
**En la zona 1, tramo 2**

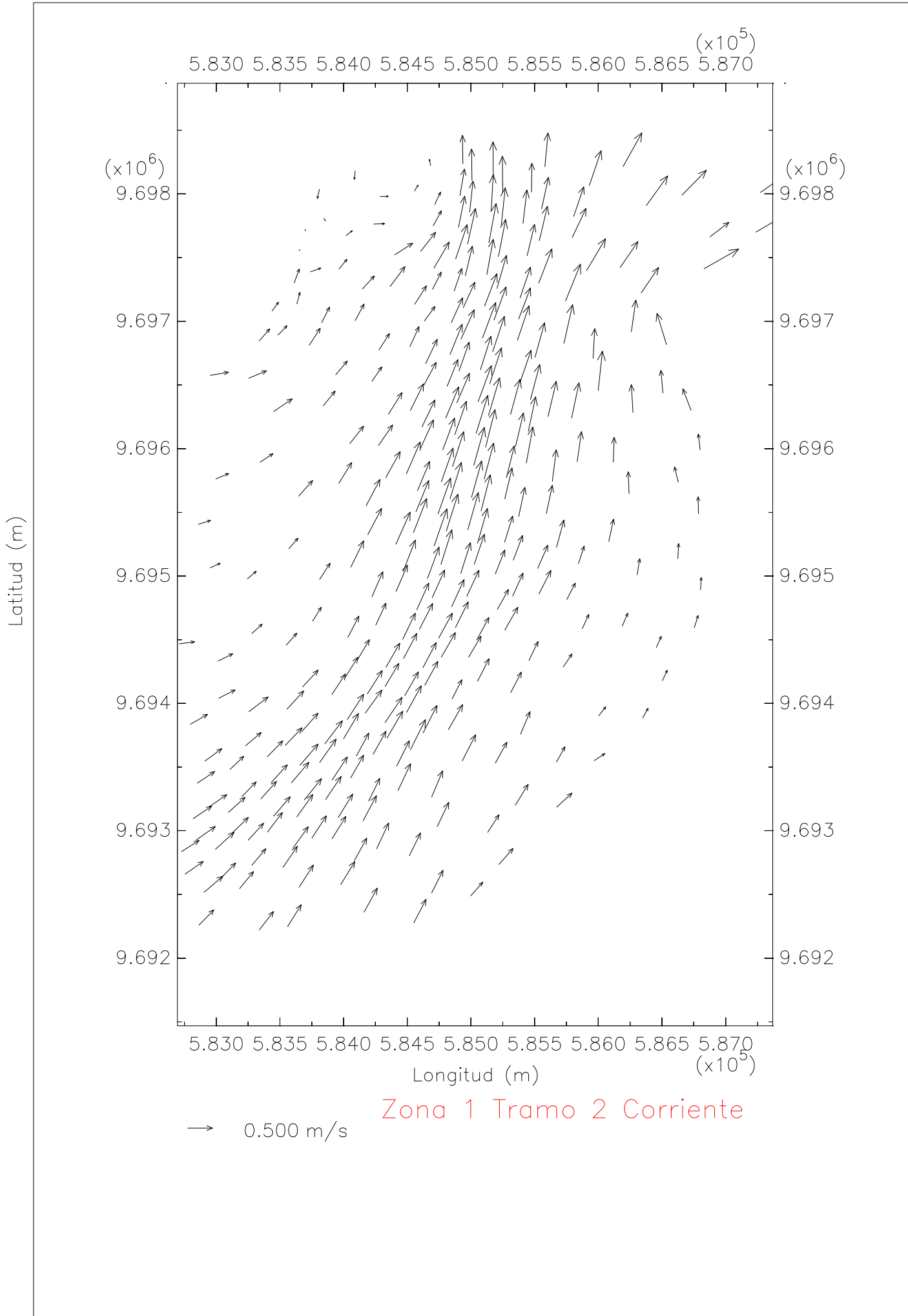
**Bajo condiciones de llenante**

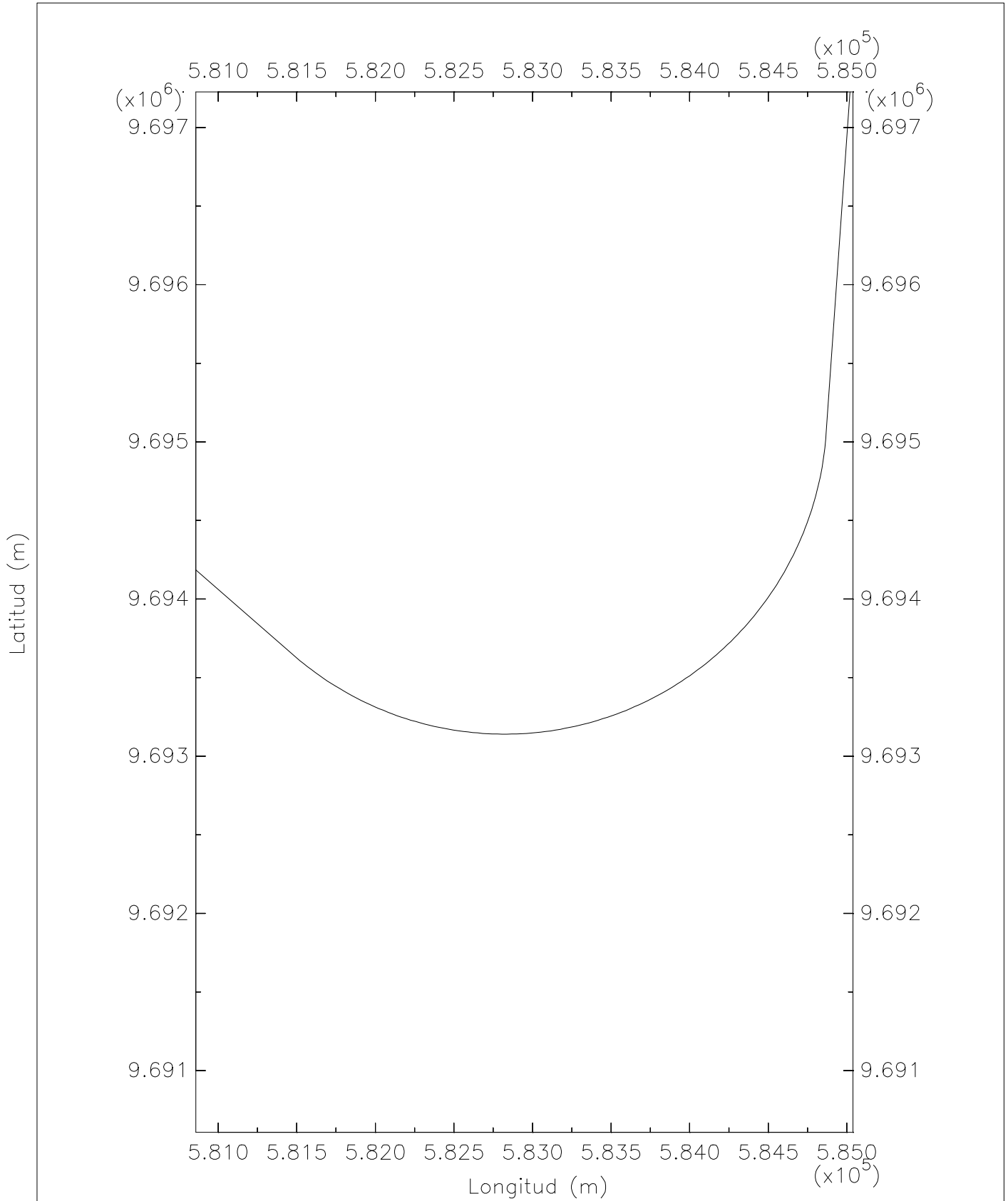


Zona 1 Tramo 2 Profundidad

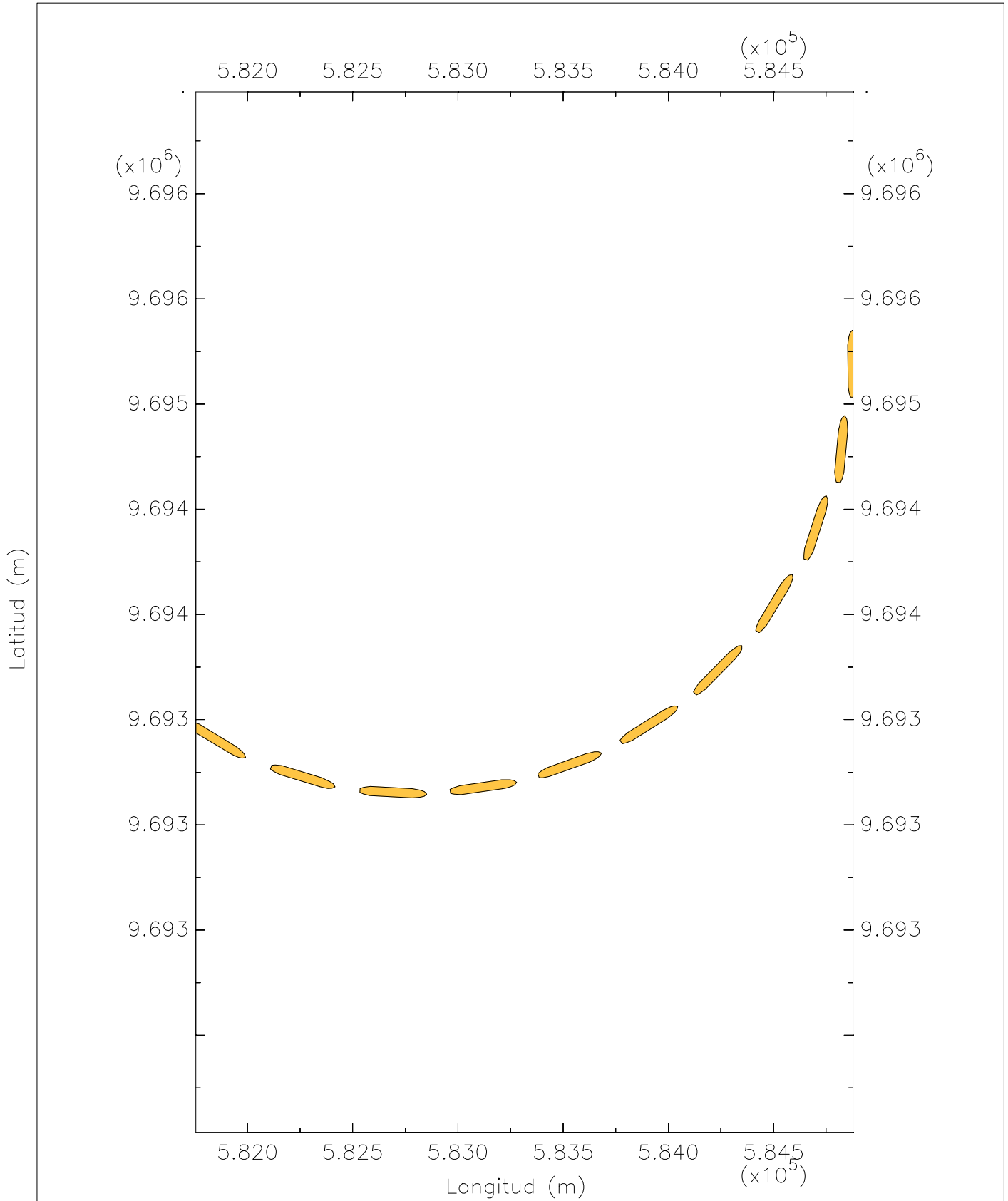




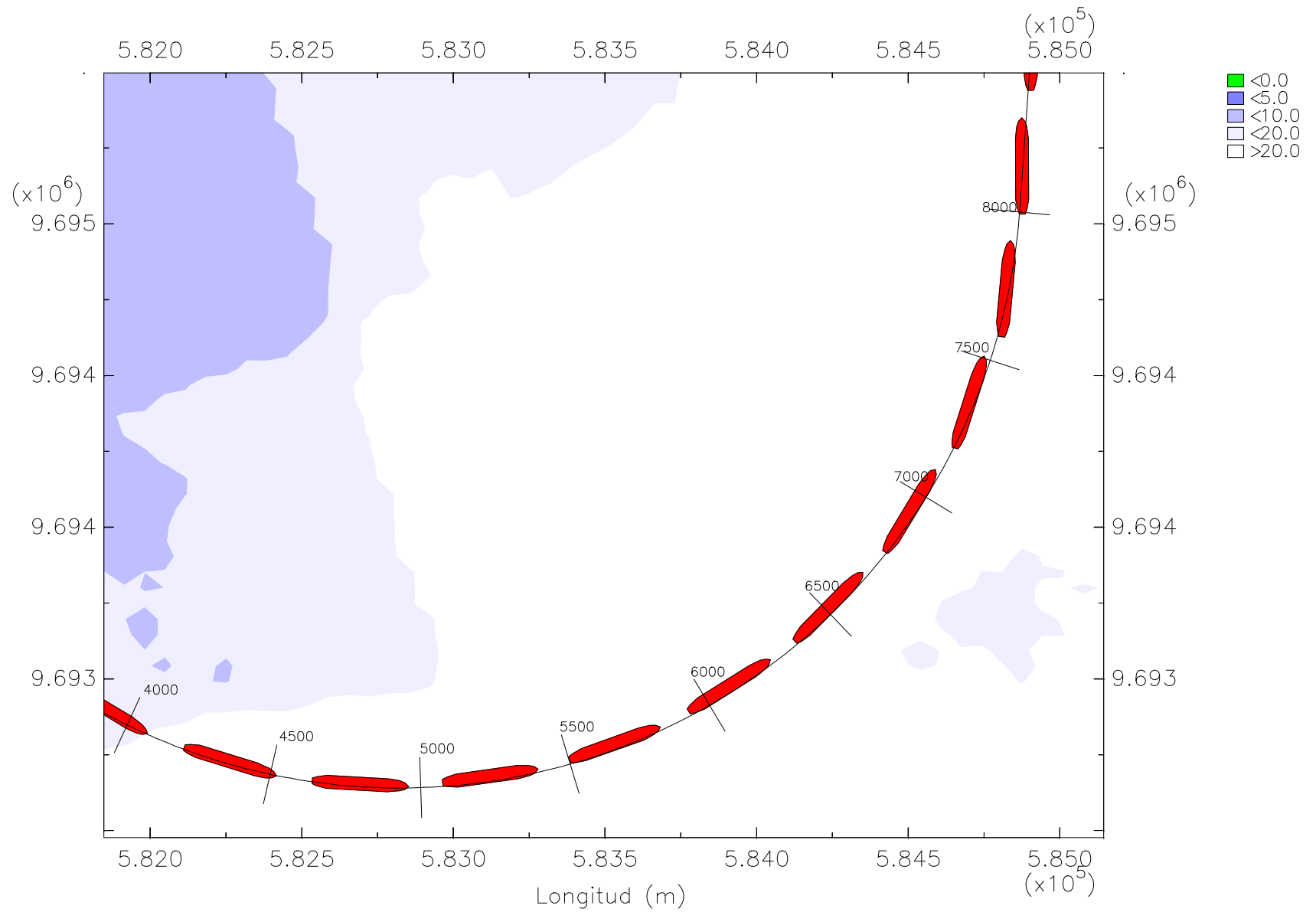




Zona 1 Tramo 2 Eje canal



Z1T2 Trayectoria del barco portacontenedores post-panamax



Z1T2 Trayectoria del barco portacontenedores post-panamax con profundidad